

1
2
3
4
5
6
7
8
9
10
11
12
13
14
15
16

**APPENDIX H:
CULTURAL RESOURCES TECHNICAL INFORMATION AND ANALYSIS**

1
2
3
4
5
6
7
8
9
10
11
12
13
14
15

This page intentionally left blank

APPENDIX H:

CULTURAL RESOURCES TECHNICAL INFORMATION AND ANALYSIS

The assessment of potential impacts on cultural resources relied on three factors identified during the Long-Term Experimental and Management Plan (LTEMP) assessment process as the primary factors affecting the stability of historic resources in the canyons: (1) erosion (Thompson and Potochnik 2000; Damp et al. 2007; Spurr and Collette 2007), (2) inundation (Baker 2013), and (3) visitor effects (Bullets et al. 2008, 2012; Jackson-Kelly et al. 2013). Metrics were formulated for these factors to quantitatively analyze the effects on cultural resources of the LTEMP alternatives based on modeling of discharge and sediment loads. The metrics are:

- Wind Transport of Sediment Index
- Flow Effects on Cultural Resources in Glen Canyon Index
- Time Off River Index

This appendix discusses the modeling of each metric and presents a detailed discussion of the modeling results. The metrics were developed through consultation with subject matter experts, findings in published papers and reports, and consideration of comments from cooperating agencies. See Section 3.8 for a more detailed description of Grand Canyon cultural resources and Chapter 2 for a detailed description of the LTEMP alternatives.

H.1 WIND TRANSPORT OF SEDIMENT

Prior to the construction of Glen Canyon Dam, periodic large-magnitude storm events would flood the Colorado River and deposit fluvial sediment onto high-elevation terraces. The deposited sediment buried and protected evidence of past human activity within the floodplain of the river. However, the dam's closure in 1964 trapped most of the sand that would have been transported into the Glen Canyon and Grand Canyon reaches of the Colorado River, and operations reduced the magnitudes of annual peak flows, which determine the elevation of the area scoured by high flows and at which new sand can be deposited. These changes decreased the renewal of sediment to high-elevation terraces downstream of the dam. With limited rejuvenation of sand, erosion can expose archaeological sites found along the riparian zone of the river.

In 2008, researchers found that, under the right conditions, sediment deposited along the riverbank above the elevation of normal operational flows can be transported by the wind and deposited on high-elevation terraces, many of which contain archaeological sites. This wind-blown sediment is thought to help stabilize archaeological sites on these high-elevation terraces. It was observed that this transfer of sediment occurred primarily in the spring months, when a reduced amount of rainfall and strong winds create optimal conditions for wind-blown sediment

1 transport (Draut and Rubin 2008). A wind transport metric was developed based on principles
2 identified by Draut and Rubin (2008). It is noted that the extent to which this process could
3 stabilize cultural resources is unknown.
4
5

6 **H.1.1 Wind Transport of Sediment—Methods**

7

8 The Wind Transport of Sediment Index (WTSI) evaluates the availability of fine
9 sediment for wind transport to cover cultural resources at higher elevations (i.e., those properties
10 located at stages above 31,500 cfs). Optimal conditions for wind transport of sediment occur
11 when (1) fine sediment is deposited by flows above the stage of normal operations and (2) low
12 flows occur during the windy season, which exposes more sand for redistribution by the wind.
13 These two conditions are accounted for by the Wind Transport of Sediment Index (WTSI) using
14 the following equation (Eq. H1), where SLI is the Sand Load Index and FF is the Flow Factor:
15

$$16 \quad WTSI = SLI \times Average(FF)_{2014-2033} \quad (H.1)$$

17

18 Both of the inputs for the metric (SLI and FF) are indices ranging from 0 to 1. The
19 resulting Wind Transport of Sediment Index is a value from 0 to 1, where a value of 1
20 corresponds to the most potential movement of sediment by the wind, and therefore has the
21 highest likelihood to contribute to the preservation of cultural resources. Both elements of the
22 equation (SLI and FF) are limiting factors in the sense that the highest value between the two is
23 the highest possible output. This mirrors the occurring environmental limitations—no more
24 sediment can be transported than available, while, regardless of availability, wet sand is not
25 likely to be easily transported by the wind.
26

27 The WTSI is calculated for a total of 63 scenarios representing different hydrologic
28 (20 traces) and sediment conditions (3 traces), and weighted by the historical exceedance
29 percentage of the sediment traces included in the scenario. Because of modeling limitations,
30 environmental factors such as erosion of sandbars due to fluctuations in water level, rainstorm
31 events which may further saturate soil, and vegetation barriers which could prevent sediment
32 transport by the wind were not incorporated into the metric. Complex parameters like these
33 would require more assumptions, which could result in less confidence in the model.
34

35 The SLI is an index of the potential sand deposited on sandbars along the river channel in
36 Marble and Grand Canyons above normal stage elevations (31,500 cfs). The SLI is calculated as
37 the ratio of the cumulative sand load at flows greater than 31,500 cfs relative to the total
38 cumulative sand load at all flows. The sand load, or the mass of sand in transport by the river, is
39 calculated at RM 30 and is computed by a version of the Sand Budget Model
40 (Wright et al. 2010) for the 20-year LTEMP modeling period. A larger SLI (on a scale of 0 to 1)
41 indicates a greater potential for sediment deposition. The SLI is described in more detail in
42 Appendix E. The SLI was calculated using Equation H.2:
43

$$44 \quad SLI = \frac{\sum_{2014-2033} \text{Sand Load at dam discharges} > 31,500 \text{ cfs}}{\sum_{2014-2033} \text{Sand Load at all dam discharges}} \quad (H.2)$$

1 The FF represents the relative exposure of dry, fluvial sand along the banks of the river
 2 available for wind transport. An increase or decrease in dam discharge will increase or decrease
 3 the downstream river elevation, respectively. Therefore, a lower discharge will expose a greater
 4 amount of sediment. For this metric, maximum daily flows above normal river stage (8,000 cfs)
 5 are considered increasing worse for sediment exposure. The maximum daily discharge (Q_{max})
 6 modeled by GTMax-Lite represents the maximum discharge released from Glen Canyon Dam in
 7 cubic feet per second (cfs) and thus the extent of dry sand for each day. The yearly FF is the
 8 average of FF_{Daily} (Eq. H.3) for the spring months of March through June.
 9

$$10 \quad FF_{Daily} = \left\{ \begin{array}{ll} \text{if } Q_{max} \leq 8,000; & 1 \\ \text{if } 8,000 < Q_{max} < 31,500; & 1.34 - 0.0000425 \times Q_{max} \\ \text{if } Q_{max} \geq 31,500; & 0 \end{array} \right\} \quad (H.3)$$

11
 12 Note that although the FF only takes into account the months of March through June, the
 13 SLI incorporates the entire year. This is because the exposure of sand is most prominent during
 14 the windy season, but the sediment transported during those months is continuously built up
 15 throughout the year.
 16
 17

18 **H.1.2 Wind Transport of Sediment—Results**

19
 20 WTSI values calculated for the LTEMP alternatives under historical flow and sediment
 21 inputs are shown in Figure H-1. The metric values represent the *potential* for sand to be
 22 transported to cultural sites rather than the actual transport that would occur or the level of
 23 protection that transport may provide to cultural sites. This results in some uncertainty with
 24 regard to actual differences in impact among the alternatives based on this metric. Our
 25 conclusions on relative impact are based on comparisons of the metric values calculated for
 26 Alternatives B, C, D, E, F, G and their long-term strategies, against Alternative A (the no-action
 27 alternative), which has the same basic operational discharge pattern as current operations under
 28 Modified Low Fluctuation Flows (MLFF). Although there is no published research for the direct
 29 impact of wind transport of sediment under MLFF on archaeological sites within the river
 30 corridor, recent research has shown that, under MLFF, approximately 1–3% of the gullies
 31 studied within reaches of the Colorado River between Glen Canyon Dam and the headwaters of
 32 Lake Mead showed obvious indication of filling by wind-blown sand (Sankey and Draut 2014).
 33

34 Of the long-term strategies analyzed, one for each alternative was selected as most
 35 representative of the alternative as fully implemented. These representative long-term strategies
 36 were A, B1, C1, D4, E1, F, and G. All of the representative long-term strategies B1, C1, D4, E1,
 37 F, and G scored greater than Alternative A because they have more frequent high-flow
 38 experiments (HFEs). Long-term strategies B2, C3, E3, E5, and E6 rank below Alternative A.
 39 With the exception of B2, HFEs are not conducted for these strategies, and flows above
 40 31,500 cfs would occur rarely, if at all. Recall that one of the primary assumptions for this metric
 41 is that flows above 31,500 cfs are the primary mechanism for sediment deposition at higher
 42 elevations. If there are no high flows to deposit sand at higher elevations along the banks of the
 43 river, there is no new sediment to be moved by the wind. Increased flow fluctuations in long-
 44 term strategy B2 cause it to rank below Alternative A.

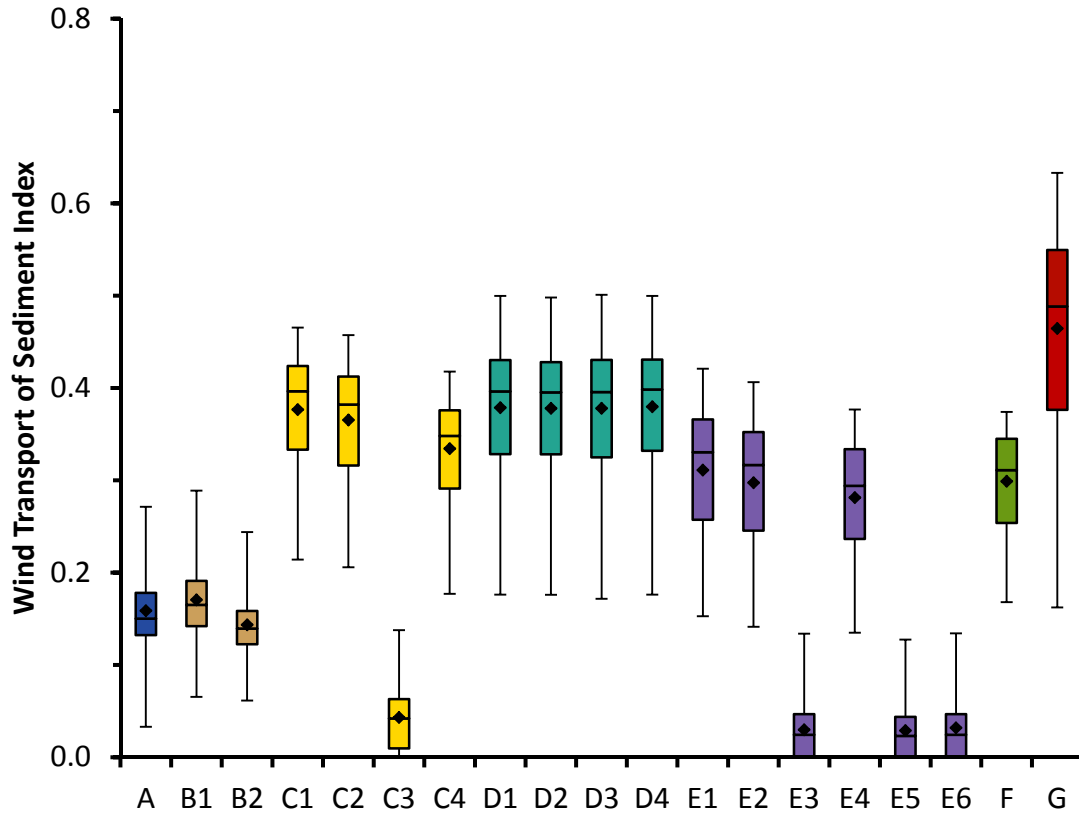
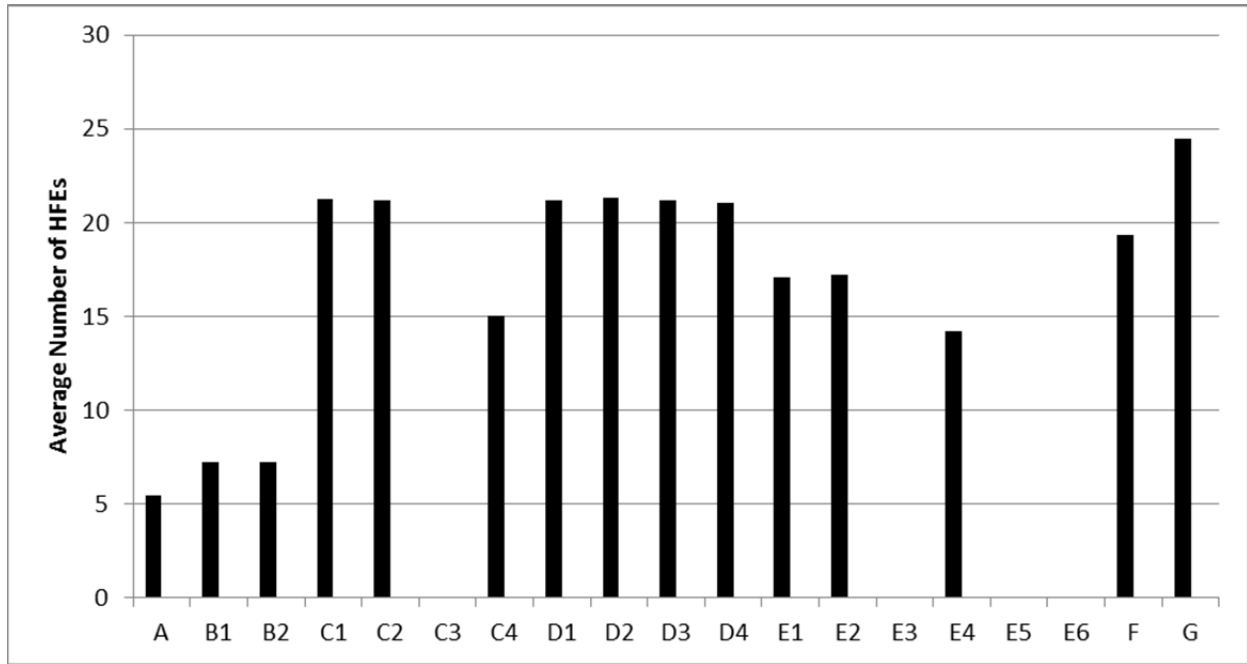


FIGURE H-1 Wind Transport of Sediment Index Values for the LTEMP Alternatives (letters) and Associated Long-Term Strategies (numbers) (Index values of 1 are considered optimal. Note that diamond = mean; horizontal line = median; lower extent of box = 25th percentile; upper extent of box = 75th percentile; lower whisker = minimum; upper whisker = maximum.)

Alternative G scores the highest of all the alternatives, with an average WTSI nearly three times greater than Alternative A. With the highest number of HFEs and the lowest maximum daily flows during the windy months (Figure H-2), this alternative has parameters ideal for wind-transport of fluvial sediment to high-elevation terraces that contain cultural resources. The second highest scoring long-term strategy, D4, is not significantly different from D1, D2, D3, and C1 (statistical differences between means based on a three-factor analysis of variance (ANOVA) followed by Tukey’s Studentized Range Test).

On the whole, the WTSI is highly correlated with the number of HFEs and the corresponding SLI. The relationship between SLI and HFEs is discussed in Appendix E. The similarity between WTSI and HFEs can be seen by comparing Figure H-1 with the average number of HFEs in Figure H-2. The WTSI is highly correlated with the SLI because the average maximum discharge between March and June for each of the alternatives is within 5,000 cfs (standard deviation of 0.05). With minimal difference in flow, the amount of sediment for distribution becomes the determining factor for the index. The exception to this is Alternative F. Figure H-3 shows a sample trace of the typical 8.23 million acre feet (maf) release year. In April,



1

2 **FIGURE H-2 Average Number of HFEs in the 20-Year LTEMP Period**

3

4

5

May, and June, the discharge of Alternative F is higher than that of all other alternatives. Although Alternative F was determined to have the second highest potential sand deposition (highest SLI), it ultimately has an average WTSI value lower than Alternatives C, D, E, and G, as larger discharges of water create less ideal conditions for wind transport.

8

9

10

Long-term strategies C2 and E2 feature low summer flows and trout management flows (TMFs) when conditions trigger them. Reallocation of water volume from low summer flows can cause increased discharge in other portions of the water year. This reallocation combined with the high-flow portion of TMFs causes C2 and E2 to rank lower than their base alternatives. Similarly, the exclusion of spring HFEs in C4 and E4 decrease their WTSI in comparison to C1 and E1.

15

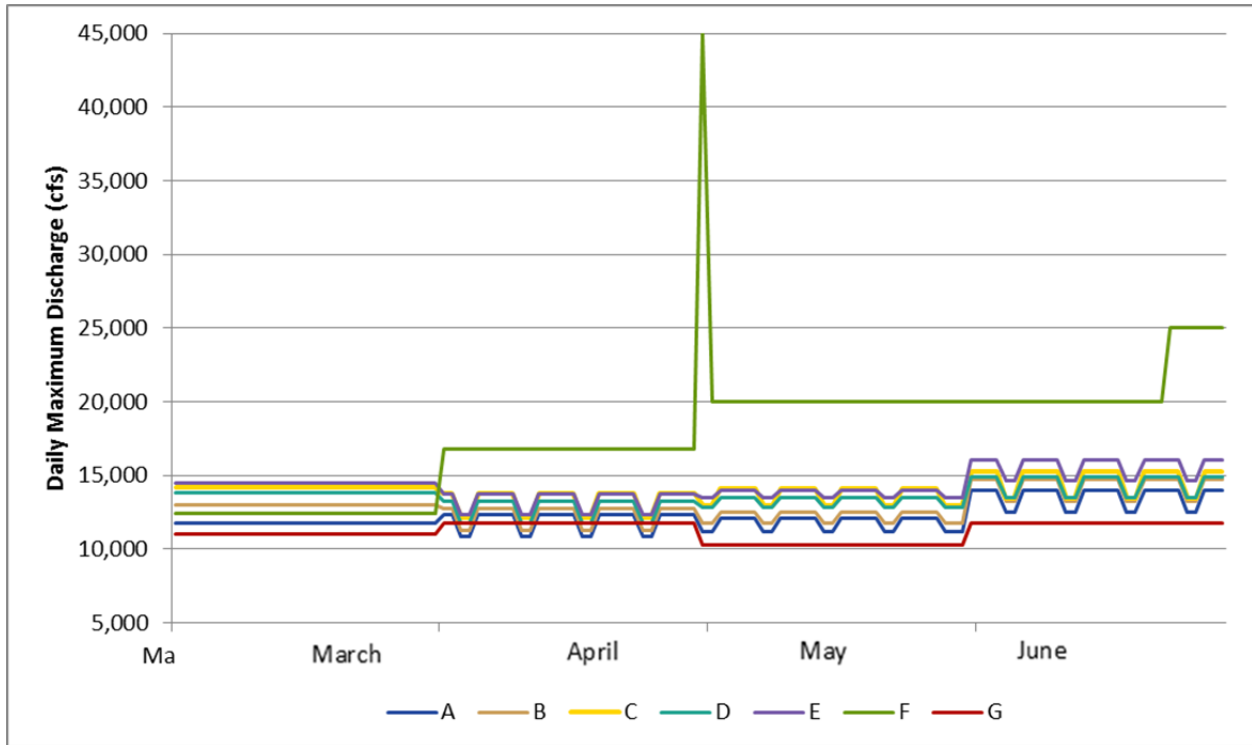
16

17

The WTSI is useful for understanding the interplay between the components of the alternatives. Alternatives that incorporate strategies for enhancing sediment retention (i.e., C, D, E, and G, which have reduced fluctuations or more even monthly volumes) have higher WTSI values. The metric also illustrates through Alternative F the effect that flow operations can have on wind transport. Index values are lower for Alternative F because the alternative features higher flows in the windier periods of the spring and summer, which negates some of the benefits of the higher sediment retention indicated in the SLI. Although the metric is beneficial for comparative and theoretical purposes, it reflects idealized conditions for wind transport of sediment that cannot be easily translated into actual site preservation. The extent to which wind transport of sediment can mitigate the erosion occurring to cultural sites on high elevation terraces remains unknown.

27

28



1
 2 **FIGURE H-3 Daily Maximum Discharge in a Typical 8.23-maf Water Volume Release Year from**
 3 **the Glen Canyon Dam during the Windy Season of March–June**
 4
 5

6 **H.2 FLOW EFFECTS ON CULTURAL RESOURCES IN GLEN CANYON**
 7

8 The construction of Glen Canyon Dam significantly scoured the immediate downstream
 9 Glen Canyon reach of the Colorado River and cut off nearly all of the sediment supply from
 10 upstream. Unlike further downstream sections of the river, a lack of significant tributaries in
 11 Glen Canyon results in very little sediment deposition on river banks of the canyon. In fact, high
 12 flows meant to distribute sediment have been shown to degrade terraces in the Glen Canyon
 13 reach (Grams et al. 2007). Archaeological sites located in Glen Canyon are also not associated
 14 with significant wind deposition of sediment (Anderson 2006). Without the rejuvenation of
 15 sediment, higher flows can increase erosion within the Glen Canyon, which is of concern for
 16 significant archeological sites.
 17

18 Anderson (2006) identified 14 archaeological sites within Glen Canyon that were being
 19 affected by river-based arroyos or gullies. However, only one of these sites, commonly referred
 20 to as Ninemile Terrace, was determined to have erosional features that are unequivocally related
 21 to direct impacts of river operations. Bank stability at Ninemile Terrace, and other terraces
 22 having the potential to contain cultural resources, is partially dependent on the accumulation of
 23 material at the base of the slope. Removal of this protective material through erosion leaves the
 24 lower-bank material prone to a continuing cycle of undercutting, collapse, and removal. This, in
 25 turn, contributes to slumping of the upper-bank material, whether dry or saturated. The flow at
 26 which the base of the slope begins to erode serves as the “flow elevation threshold.” Flows at or

1 above this threshold have the potential to adversely affect cultural resources through bank
2 erosion and destabilization (Baker 2013). Time-lapse photography from the November 2012
3 HFE shows that the inundation of the existing base of the slope at Ninemile Terrace occurs at a
4 flow of 23,200 cfs.

5
6 Ninemile Terrace reflects many characteristics of other sites in Glen Canyon and was
7 considered representative of other Glen Canyon terrace sites for determining the effects of water
8 flow on high-elevation terraces. In the absence of direct field measurements to further clarify a
9 flow elevation threshold, the flow rate of 23,200 cfs was selected by Grand Canyon Monitoring
10 and Research Center (GCMRC) staff as an approximate measure to represent the flow elevation
11 above which erosional processes could contribute to impacts that have the potential to adversely
12 affect cultural resources.

15 **H.2.1 Flow Effects on Cultural Resources in Glen Canyon—Methods**

16
17 Impacts on cultural resources in the Glen Canyon reach were determined by calculating
18 the number of days per year that the maximum daily flow would be >23,200 cfs. Therefore, a
19 higher number represents the increased potential of erosion of terraces that contain cultural
20 resources. The maximum daily flow is used to capture all instances where flow is high enough to
21 contribute to erosional processes. As with the WTSI, a total of 63 scenarios of different
22 hydrologic and sediment conditions were analyzed.

23
24 This metric determines the relative difference among alternatives for the potential
25 impacts of flow on cultural resources. Research would be needed to determine the number of
26 days of high flow that would produce noticeable or extensive impacts on cultural sites.

29 **H.2.2 Flow Effects on Cultural Resources in Glen Canyon—Results**

30
31 The number of days per year flows would be >23,200 cfs under each alternative are
32 shown in Figure H-4. The average number of days flows would be >23,200 cfs ranges from 18 to
33 36 days among the alternatives. High maximum values of 50–77 days would occur under all
34 alternatives (as noted by the upper whisker) and would occur in years with abnormally high
35 water volumes released from Glen Canyon Dam.

36
37 Alternative A has the highest number of days per year flows would be >23,200 cfs.
38 Alternative A most closely represents the current conditions of MLFF. Long-term strategies C3,
39 E3, E5, and E6 (long-term strategies with no HFEs) have average values that are lower than
40 under Alternative A, but by no more than 3 days. Alternative F would have the highest number
41 of days per year flows would be >23,200 cfs with an average of 14 days per year more than
42 under Alternative A. Alternative F, therefore, has the highest potential for impacts on terraces
43 that contain cultural resources in Glen Canyon. The higher number of days under Alternative F
44 results from the relatively high spring flows between May and June (Section 2.2.6). The
45 remaining alternatives have an average number of days per year flows would be >23,200 cfs
46 within 4 days of those under Alternative A.

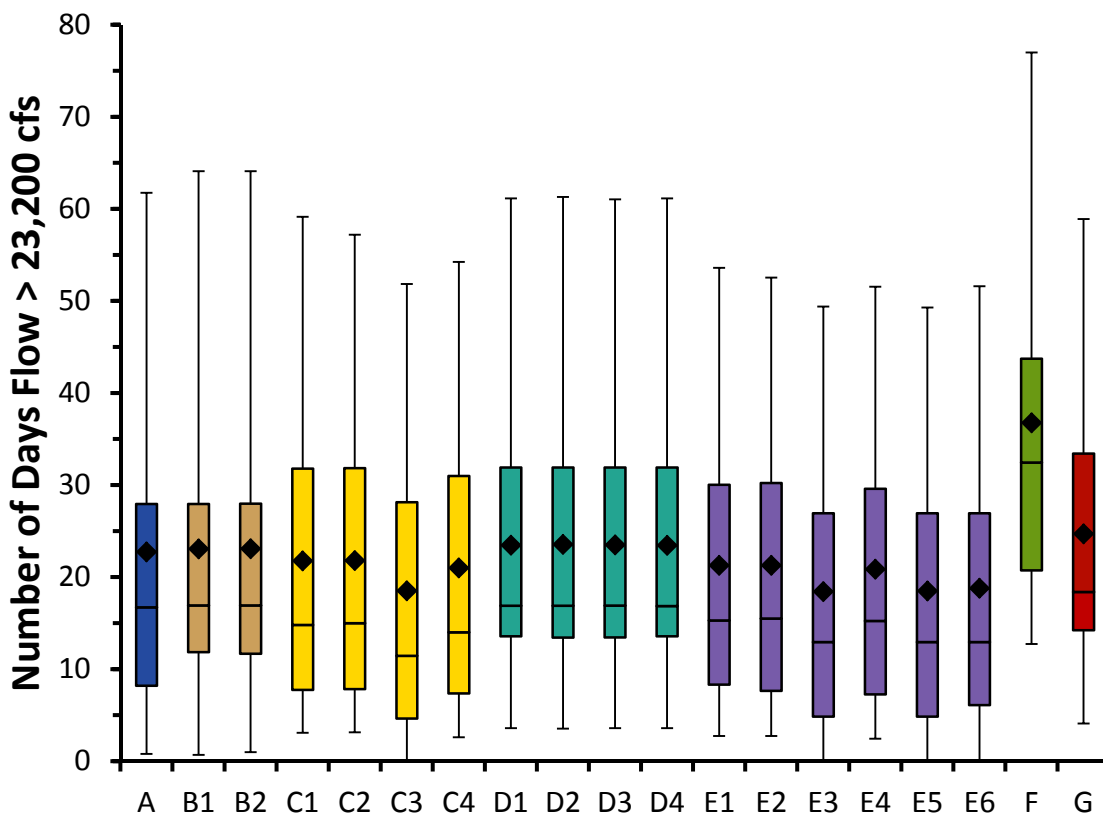


FIGURE H-4 Number of Days per Year Flows Would Be >23,200 cfs under LTEMP Alternatives (Letters) and Long-Term Strategies (Numbers) (Flows of this magnitude have the potential to affect cultural resources in Glen Canyon. Note that diamond = mean; horizontal line = median; lower extent of box = 25th percentile; upper extent of box = 75th percentile; lower whisker = minimum; upper whisker = maximum.)

Besides the high spring flows of Alternative F and HFEs under all alternatives, operational changes within long-term strategies seem to have minimal effect on the number of days per year flows would be >23,200 cfs. Long-term strategy B2 includes tests of hydropower improvement flows (i.e., operations with wider water release fluctuations in high electrical demand months than the base operations of B1). Although hydropower improvement flows increase within-day flow fluctuations, in most cases, the altered maximum flow does not exceed 22,000 cfs. Therefore, long-term strategies B1 and B2 have nearly identical values and are not significantly different. Long-term strategies C2, D3, E2, and E5 all have low summer flows. Low summer flows result in higher flows at other times of year, but do not affect the number of days per year flows would be >23,200 cfs, and these long-term strategies will not have any effect on this metric. TMFs would also have minimal effect on this metric.

Although there are differences among alternatives in the number of HFEs (Figure H-2), these differences have little effect on the number of days per year flows would be >23,200 cfs. This occurs because HFEs are relatively short (Figure H-5), and the large volume released under the HFE must be compensated by releasing less water at other times of the year (Figure H-6).

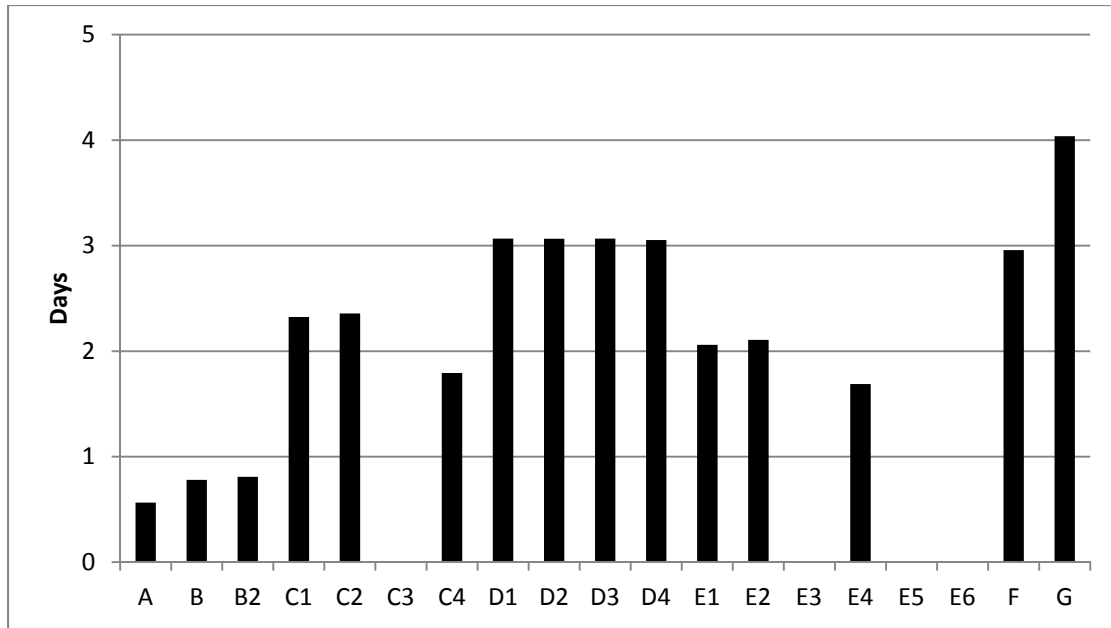


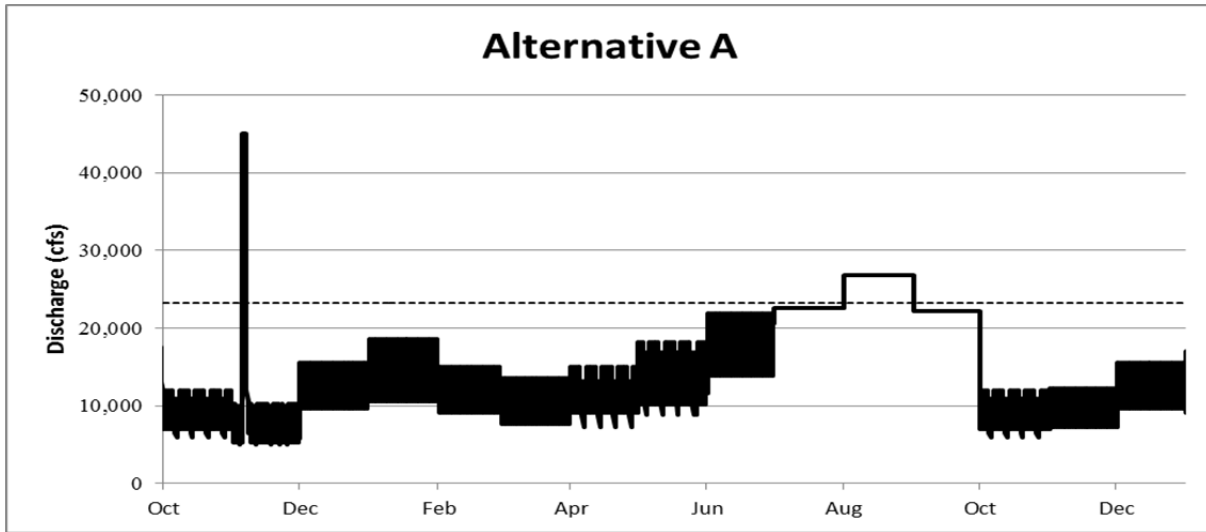
FIGURE H-5 Average Number of Days of an HFE Event per Year

Since all alternatives must release the same annual volume of water, alternatives with HFEs may have lower releases at other times of years than those without. The effect on the metric would be greater in years of high volume (≥ 10 maf) when equalization flows would be implemented according to the Interim Guidelines (Reclamation 2007).

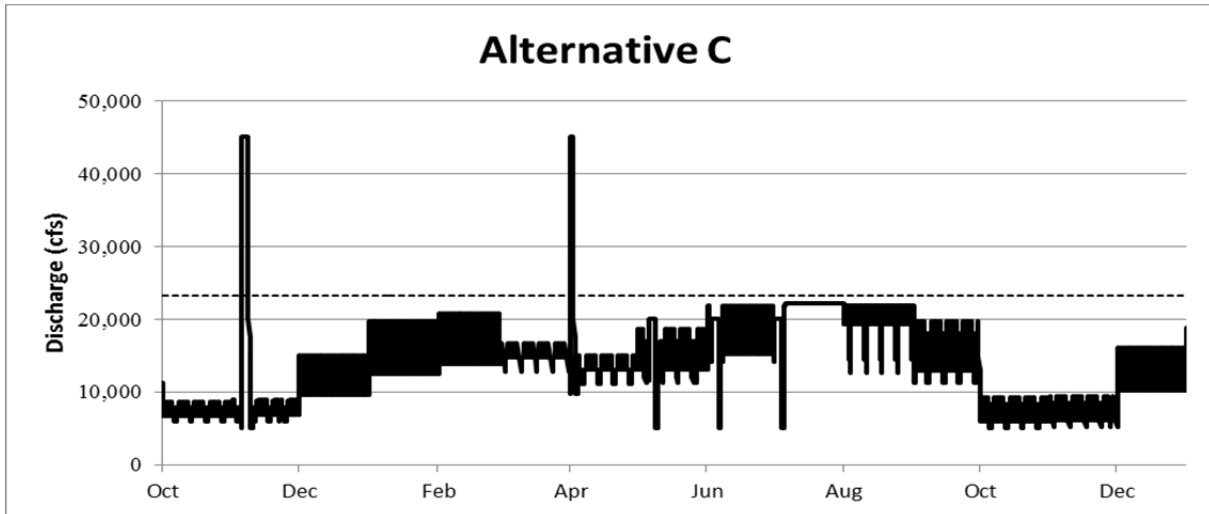
This explains why Alternative A and B, with minimal HFE events, have nearly the same metric value as alternatives like Alternative C with more than four times the number of HFEs (Figure H-2). Although Alternative C has two HFEs in Figure H-6 and Alternative A has only one, Alternative A must release more water in August to compensate. Historically, precipitation was higher than conditions in recent years; therefore, equalization flows may be triggered less frequently and days above 23,200 cfs might be less than those based on historical flows. The 50th and 25th percentile values are more applicable to recent climate conditions seen in the Glen Canyon region. It is also noted that the variability (noted by the length of box) in the value is a result of the variability in the release volume between water years, HFEs, and the interaction between the two for a particular alternative.

H.3 TIME OFF RIVER

Greater discretionary time for whitewater rafters to explore the canyons downstream of Glen Canyon Dam increases the likelihood that they could have an impact on archaeological sites by creating trails to sites or looting or vandalizing sites. When the river is moving at a faster pace and boat travelers arrive at their destination earlier, their discretionary time off river increases. It is therefore hypothesized that higher flows may increase the potential for adverse human contact with archeological sites.



1
2
3



4

5 **FIGURE H-6 Modeled Glen Canyon Dam Discharge for the Same Year (the line represents**
 6 **23,200 cfs)**

7
8

9 **H.3.1 Time Off River—Methods**

10

11 The Time Off River Index (TORI) represents the degree to which flows could affect
 12 visitor potential to interact and disturb cultural sites. Grand Canyon visitor numbers vary
 13 depending on the time of the year. Recreational activity is more common in the warmer summer
 14 months, less so in the spring and fall months, and even less in the colder winter months. The
 15 yearly TORI (Eq. H.4) is the ratio of the sum of seasonal ratios which designate flows ideal for
 16 minimal visitor-site interaction. Summer has the highest weight (0.54) while winter has the
 17 lowest (0.15) and spring and fall are in between (0.31). The TORI is a 0–1 value, where 1 equals
 18 the least discretionary time for visitors to access archaeological sites, and, therefore, the lowest
 19 potential for impacts on cultural sites.

$$TORI = \left\{ 0.15 \left(\frac{\sum_{winter} ORFF}{\sum_{Days_{winter}}} \right) + 0.31 \left(\frac{\sum_{spring} ORFF}{\sum_{Days_{spring}}^{fall}} \right) + 0.54 \left(\frac{\sum_{summer} ORFF}{\sum_{Days_{summer}}} \right) \right\} \quad (H.4)$$

An overall annual mean TORI value for the 20-year modeling period was developed for each alternative and used as the performance metric (Eq. H.5).

$$TORI = Average (TOR_{annual})_{2014-2033} \quad (H.5)$$

The Off River Flow Factor (ORFF) represents the potential for discretionary time off river. The discharge level at which boats begin to exceed typical river travel times is 10,000 cfs. However, once flows reach above 31,500 cfs, visitors are more likely to stay at campsite areas rather than travel in a turbulent river. Daily average flows (Q_{avg}) represent the average release from Glen Canyon dam in cfs. Average daily discharge from the dam was modeled in GTMax-Lite. The ORFF is a 0–1 value, where 1 indicates the lowest potential for discretionary time off river and therefore the lowest potential for increased visitation of archaeological sites. Specifically, the average daily ORFF is assigned as follows (Eq. H.6), where the value within the brackets in the right column is assigned to $ORFF_{Daily}$ if the equation in the left column is satisfied:

$$ORFF_{Daily} = \left\{ \begin{array}{ll} \text{if } Q_{avg} \leq 10,000; & 1 \\ \text{if } 10,000 < Q_{avg} < 31,500; & 1.465 - 0.0000465 \times Q_{avg} \\ \text{if } Q_{avg} \geq 31,500; & 0 \end{array} \right\} \quad (H.6)$$

As with the WTSI, a total of 63 scenarios of different hydrologic and sediment conditions were analyzed.

H.3.2 Time Off River—Results

TORI does not specify how much additional discretionary time off river a visitor may experience. Instead, TORI is intended to determine the potential for visitors to spend more time off of the river exploring, which could result in more cultural resources being visited and possibly affected, by examining the flows under the various alternatives as compared to Alternative A.

A summary of TORI results is provided in Figure H-7. All of the alternatives and their long-term strategies performed similarly within this metric. Values of TORI under long-term strategies B1, B2, C2, and C4 were not significantly different than those under Alternative A. Although Alternatives D, E, and G rank the highest with regard to this value (and thus would be expected to have the lowest impact), the minimal differences in the metric values from Alternative A would likely indicate that they would not have noticeable impacts on visitor-site interactions.

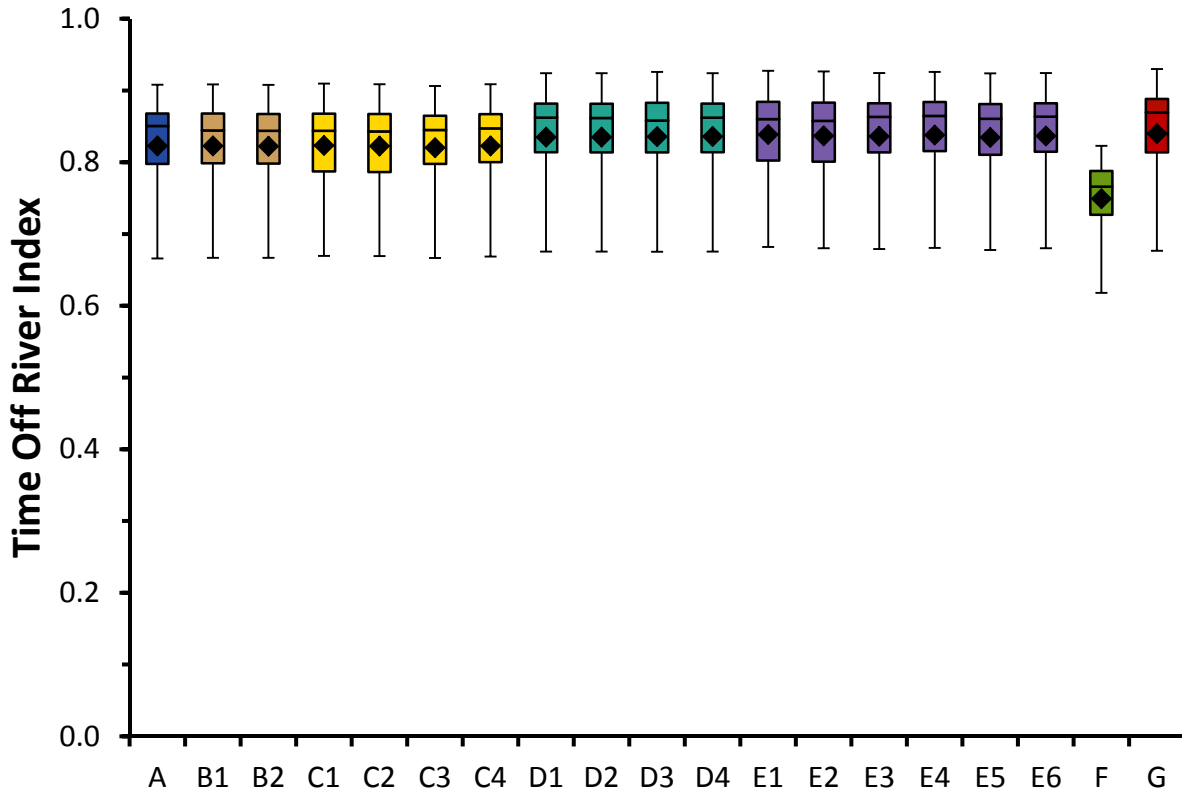
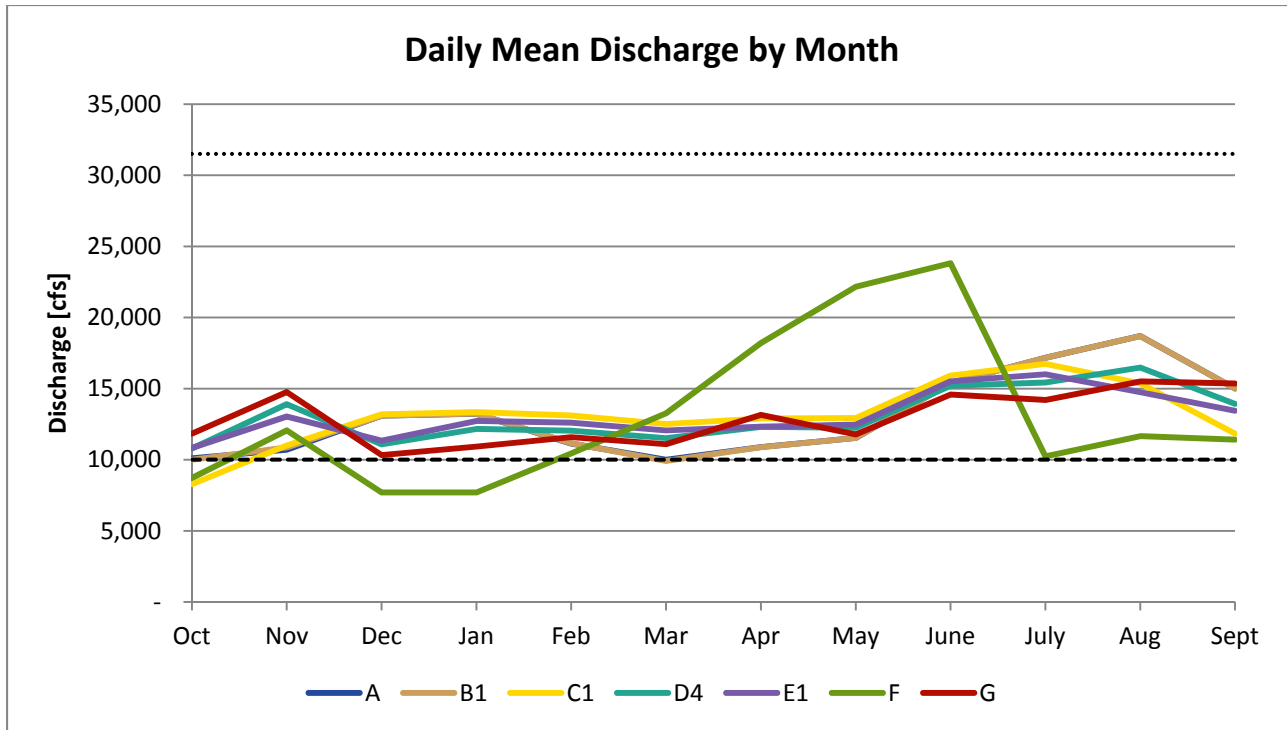


FIGURE H-7 Time Off River Index Values for All LTEMP Alternatives (Letters) and Associated Long-Term Strategies (Numbers) (Index values of 1 are considered optimal. Note that diamond = mean; horizontal line = median; lower extent of box = 25th percentile; upper extent of box = 75th percentile; lower whisker = minimum; upper whisker = maximum.)

The difference between the TORI for Alternative F and the other alternatives is largely due to flows during the spring and early summer that are generally at or above 20,000 cfs, while all other alternatives have daily flows that average between 8,000 and 12,000 cfs. Figure H-8 shows the difference in average discharge between Alternative F and the other alternatives. Although Alternative F has very low flows in December and January, the alternative has flows that are more than 7,000 cfs higher than other those under other alternatives in spring and early summer months.

TORI values would be higher in years of high volume (>10 maf) when relatively high equalization flows would be implemented according to the Interim Guidelines (Reclamation 2007). However, these relatively high releases result from high inflow volumes in wet years, are unavoidable, and differ little among alternatives.



1

2 **FIGURE H-8 Daily Average Discharge for Representative Long-Term LTEMP Strategies**

3

4

5 **H.4 REFERENCES**

6

7 Anderson, K.C., 2006, *Geoarchaeological Investigations of 53 Sites between Glen Canyon Dam*

8 *and Paria Riffle*, Navajo Nation Archaeology Department Report No. 05-229, U.S. Bureau of

9 Reclamation.

10

11 Baker, T., 2013, *Contributions to the Glen Canyon National Recreation Area Cultural Resources*

12 *Metric*, National Park Service, Dec. 6.

13

14 Bullets, K., C. Bullets, D. Austin, and A. Phillips, III, 2008, *2008 Southern Paiute Consortium*

15 *Colorado River Corridor Resource Evaluation Program Annual Report of Activities*, prepared by

16 the Southern Paiute Consortium, Pipe Spring, Ariz., and the Bureau of Applied Research in

17 Anthropology, University of Arizona, Tucson, Ariz., for the Bureau of Reclamation,

18 Flagstaff, Ariz., Sept.

19

20 Bullets, C., M. Osife, S. Anderson, A.M. Phillips, III, C. Cannon, K. Bullets, and D. Austin,

21 2012, *2012 Southern Paiute Consortium Colorado River Corridor Resources Evaluation*

22 *Program Annual Report of Activities*, prepared by the Southern Paiute Consortium, Pipe Spring,

23 Ariz., and the Bureau of Applied Research in Anthropology, University of Arizona,

24 Tucson, Ariz., for the Bureau of Reclamation, Flagstaff, Ariz., Oct.

25

- 1 Damp, J., J. Pederson, and G. O'Brian, 2007, *Geoarchaeological Investigations and An*
2 *Archaeological Treatment Plan for 151 Sites in the Grand Canyon*, Arizona, Utah State
3 University, March.
4
- 5 Draut, A.E., and D.M. Rubin, 2008, *The Role of Eolian Sediment in the Preservation of*
6 *Archeologic Sites along the Colorado River Corridor in Grand Canyon National Park*, Arizona,
7 U.S. Geological Survey Professional Paper 1756.
8
- 9 Grams, P.E., J.C. Schmidt, and D.J. Topping, 2007, "The Rate and Pattern of Bed Incision and
10 Bank Adjustment on the Colorado River in Glen Canyon Downstream from Glen Canyon Dam,
11 1956–2000," *Geol. Soc. Am. Bull.* 119:556–575.
12
- 13 Jackson-Kelly, L., D. Hubbs, C. Cannon, and A.M. Phillips, III, 2013, *Evaluating Hualapai*
14 *Cultural Resources along the Colorado River May and August 2012*, prepared by Hualapai
15 Department of Cultural Resources, Peach Springs, Ariz., for Upper Colorado Regional Office,
16 Bureau of Reclamation, Salt Lake City, Utah, May 8.
17
- 18 Reclamation (Bureau of Reclamation), 2007, *Record of Decision, Colorado River Interim*
19 *Guidelines for Lower Basin Shortages and the Coordinated Operations for Lake Powell and*
20 *Lake Mead*, Bureau of Reclamation, Upper and Lower Colorado Region, Dec. Available at
21 <http://www.usbr.gov/lc/region/programs/strategies.html>. Accessed May 2013.
22
- 23 Sankey, J., and A. Draut, 2014, "Gully Annealing by Aeolian Sediment: Field and Remote-
24 Sensing Investigation of Aeolian-Hillslope-Fluvial Interactions, Colorado River Corridor,
25 Arizona, USA," *Geomorphology* 220:68–80.
26
- 27 Spurr, K., and J.H. Collette, 2007, *Condition Assessment and Significance Evaluation for*
28 *Cultural Resources between Glen Canyon Dam and Paria Riffle, Glen Canyon National*
29 *Recreation Area, Arizona*, prepared by the Navajo Nation Archaeology Department Northern
30 Arizona University Branch Office for the Bureau of Reclamation, Upper Colorado Region,
31 Salt Lake City, Utah.
32
- 33 Thompson, K.S., and A.R. Potochnik, 2000, *Development of a Geomorphic Model to Predict*
34 *Erosion of Pre-dam Colorado River Terraces Containing Archaeological Resources*, Cultural
35 Resources Report No. 99-257, prepared by SWCA Environmental Consultants, Inc., submitted to
36 U.S. Geological Survey, Grand Canyon Monitoring and Research Center.
37
- 38 Wright, S.A., D.J. Topping, D.M. Rubin, and T.S. Melis, 2010, "An Approach for Modeling
39 Sediment Budgets in Supply-Limited Rivers," *Water Resources Research* 46(10):W10538.
40 DOI:10.1029/2009WR008600.
41